

ALEX AND ANI
(+) ENERGY

MADE IN AMERICA WITH LOVE



404 S. THIRD ST
GENEVA, IL | 630.232.4200

POSITIVELY AUTHORIZED RETAILER

Geneva Community High School

416 McKinley Avenue
Geneva, Illinois 60134



Phone: (630) 463-3800
Fax: (630) 463-3809

Dear Friends of Geneva's Theatre Productions:

Welcome to Geneva Community High School's Viking Revue. I greatly appreciate your support of our talented students. I hope you'll join us next year for our 2015-2016 productions, and I invite you to enhance our theatre programs through membership in the Geneva High School Theatre Boosters.

Our performers, crew and director this evening have devoted themselves to the creation of this production; and we truly appreciate their inspired performances and dedication. Their continued commitment to the drama program underscores the rich tradition of excellence and success in our performing arts endeavors.

Thank you very much for your attendance as loyal patrons of Geneva's theatre productions throughout the year. We hope you enjoy the performance this evening.

Sincerely,

Tom Rogers
Principal

Viking Revue



Loberg, Miki & O'Brien, LLP
Certified Public Accountants

514 W. State Street, Suite 202
Geneva, IL
630-845-CPAS (2727)

We commend all the fine actors and actresses
for your hard work, dedication and the
energy of your performances.



WE APPLAUD YOU!



MCCALL
FAMILY DENTISTRY

407 WILLIAMSBURG AVE.
GENEVA, IL 60134

630-232-9620

WWW.MCCALLFAMILYDENTISTRY.COM
FACEBOOK.COM/MCCALLFAMILYDENTISTRY



JAMES MCCALL, D.D.S.



RYAN J. MCCALL, D.D.S.

MAKING GENEVA PROUD
TO SMILE FOR 35 YEARS.

We want to thank all of our wonderful sponsors
for the 2014 - 2015 Season

VIP

Stephen and Heidi Wiseman
Susan Shaw
Debbie and Kraig Mickelsen

SHODEEN

Benefactor

Larry and Beth Gies
Gerard and Barbara Novy
Mary and Herb Stith
Cash and Rebecca Colbert
Bob and Marcy Curran
Kevin and Darcy Carberry
Tracy Temple, Trace of Indulgence

Patron

Samantha Tawzer	Laurie Grant
John and Cynthia Downey	Maureen Borodin
Cindy and Mike Spencer	Graber Family
Deb and Tom Dickinson	David and Gwen Gelfuso
Tom and Mary Rogers	Doug and Cara Drexler
Dom and Missy Donatelli	Matthew Schubert
Kris and Don Nims	Carol and Christopher Rich
Kathleen and Al Brown	The Sullivan Family

..... they help make the dreams come alive!

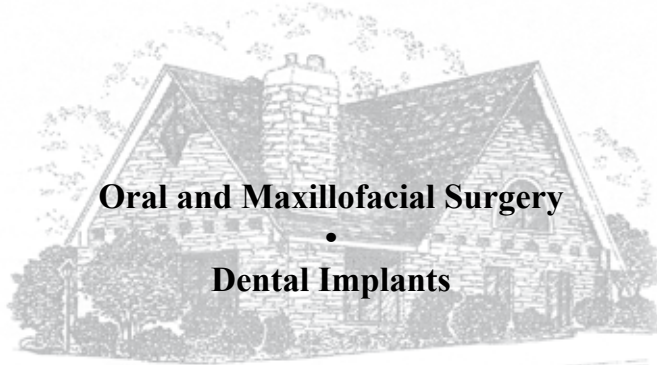
Viking Revue

SPECIAL THANK YOU!

Special Thanks to:

- Roxanne Curtis, Viking Revue Director
- Mary Toledano, Technical Director
- Debbie Hanson, Ticket Coordinator
- Photography by John Downey
- Cover Graphic Design by Rebecca Lang
- GHS Theatre Boosters logo design by Elizabeth Koskiewicz
- Mr. Joe Stanton and Fagans Graphic Design and Printing Services
- The GHS Theatre Boosters and every parent who volunteered time, props, and anything else we needed throughout the year.

HERBERT D. STITH, D.D.S.



Oral and Maxillofacial Surgery

Dental Implants

1131 Randall Court
Geneva
630-208-6700

Diplomate, American Board of Oral and Maxillofacial Surgery

Viking Revue

Tech Crew



Stage Manager

Laura Termondt

Student Lightboard Operator

Ian Dinning

Student Sound Operator

Megan Curran and Claire Oetter

Stage Right Captain

Katt Kopija-Erickson

Stage Left Captain

Anna Hickey

Props Head

Griffin Curran

Crew

Sydney Andersen, Quinn Falk, Josie Paul and Claire Colbert

Viking Revue

PAWS IN TIME West Chicago 630-208-7772
PET RESORT Oswego 630-554-0303
www.pawsintime.net



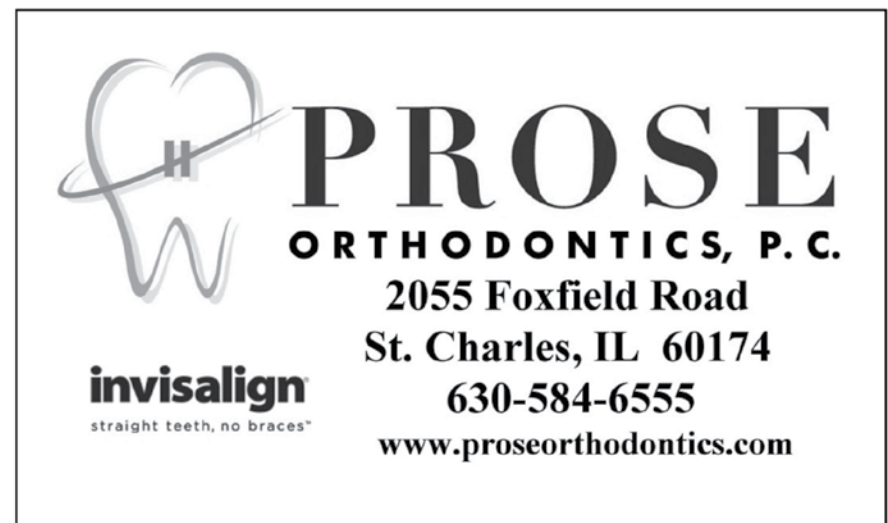
Viking Revue

VIKING REVUE 2015 MC'S



Sara Temple, Cameron Graber, Andy Vanthournout,
Mary Kate Stanfa, and Isabella Kane

 <p>GRAHAM'S FINE CHOCOLATES & ICE CREAM</p> <p>302 S. 3rd St., Geneva, IL Phone: (630)232-6655 www.grahamschocolate.com</p>	 <p>GRAHAM'S 318 COFFEEHOUSE</p> <p>318 S. 3rd St., Geneva, IL Phone: (630)845-3180 www.318coffeehouse.com</p>
--	---



PROSE
ORTHODONTICS, P. C.
2055 Foxfield Road
St. Charles, IL 60174
630-584-6555
www.proseorthodontics.com

invisalign
straight teeth, no braces™

Viking Revue

ACT I

CRITICAL MASS

GHS JAZZ BAND 1

**directed by Patrick Frederick*



Hannah Barnes
Alex Cordogan
Ian Dixon
Olivia Eich
Graeme Evenson
Alec Fenne
Grayson Frazier
Caleb Fringer

Brad Geneser
Jakob Grootens
Jack Henry
Ryan Hicks
Bob Kush
Nolan Kutz
Parker Livingston
Maddie Moller

Adam Nigh
Carrie Ostergard
Nicole Severson
Ben Shabowski
Charles Stuedemann
Mike Wagner
Jake Zicherman

Viking Revue



LOVELY
Jenna Kaba



PULLED
Emily Brown



DECEIVE TO AMAZE
Tristan Morgan

**It's
good
to be a
star!**



As seen in *Chicago Magazine*:

**Nelson Named Five Star
Home/Auto Insurance Professional!**

Among top 1% of Chicagoland insurance agents!



Bill Nelson, Agent

1930 W. Main St., St. Charles
(Just east of Randall Rd.)
630-443-5100
bill@billnelsonagency.com



**Providing insurance & financial services
to the Fox Valley since 1997.**
State Farm, Bloomington, IL

COUPON



-ONE COUPON PER WASH-
NOT VALID WITH OTHER OFFERS OR GIFT CERTIFICATES
Expires 6/30/15 No Exceptions

\$300

OFF REG. PRICE

Located on State Street (Rte. 38)

Good Only At Fuller's Car Washes

630.845.0055

**SOUND SCULPTOR
RECORDING STUDIO - GENEVA, IL**



**Dance & Gymnastics Apparel,
Shoes, Accessories & More**

Girls/Women and Boys/Men

322 W. State Street, Suite 104
Geneva, IL

630-465-0830
331-248-0531

M, T, W 10am-6pm | Thurs 10am-7pm

Fri 10am-6pm | Sat 10am-5pm

Sunday Closed

www.dancersdream.us

Viking Revue

EVERYBODY WANTS TO RULE THE WORLD

GHS WINTERGUARD



Alexi Ascencio
Tess Browne
Katia Crosier
Emily Hall
Maddie LaManna

Ronni-Sue Portn
Kirsten Raver
Sam Reattoir
Carmela Rumoro
Katie Sinisko

**Thank you to all the businesses that appear in this program,
because without their support, this program would not
be possible. We encourage you to return the favor by
patronizing these local companies and mentioning
that you saw their advertisement in this program.**

**SHAW | JACOBS | GOOSTREE
& ASSOCIATES, P.C.
ATTORNEYS AT LAW**



Practice Concentrated in
FAMILY LAW

*Divorce • Child Custody • Child Support • Alimony
Adoption • Pre-Marital Agreements • Paternity
Legal Separation • Visitation*

Stephen M. Jacobs ~ Matthew G. Shaw ~ Tricia D. Goostree

Robin M. Zandri ~ Jeffrey D. Muntz ~ Anthony J. Giudice

FREE CONSULTATIONS
(630) 584-4800
www.familydivorcelaw.com

555 South Randall Road, Suite 200, St. Charles IL 60174

Viking Revue



HANG ON LITTLE TOMATO

Maria Browne, Elizabeth Lyke, and Kristian Moravec



THE ELEPHANT & THE FLY

Brad Geneser & Aydan Hensley
accompanied by Emma Ehrhardt

**Teaching Safety
is *NO* Accident!**

ADVANCED DRIVING INSTITUTE

630.232.8700

Our Program Replaces High School Driver's Ed.

Drive Home Safe Driving School

2401 W. Kaneville Rd., Unit 1

Geneva, IL 60134

Teen and Adult Instruction

All Instructors are
Law Enforcement
Trained Professionals

www.DriveHomeSafe.net

Registration requires a \$50 deposit. Balance due before the first day of class. Cash, Check, VISA and MasterCard accepted.

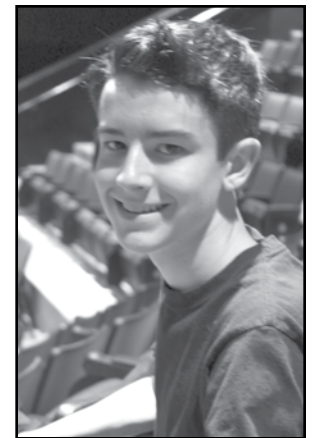
Register Early, Classes are filling up fast!

Viking Revue



FOR GOOD

Aly Fogel & Simran Sachdev



PIRATES OF THE CARIBBEAN

“Captain” Jack Davine

INTERMISSION

Viking Revue

ACT II

UPTOWN FUNK

FENNE & THE JETS



Graeme Evenson
Alec Fenne
Christian Fournier

Caleb Fringer
Jack Henry

Ryan Hicks
Adam Nigh



TAYLOR, THE LATTE BOY
Maddy Donatelli

Viking Revue



COUGH SYRUP
Alec Fenne & Mary Kate Stanfa



SOMEWHERE IN AMERICA
Annie Brown, Natalie Carberry, and Margot Downey

Viking Revue



LULLABY
Alice Hong

Viking Revue



HANDSOME HANDS
Bella Bernath



FRIEND OF THE DEVIL
Natalie Carberry & Caroline Rau



RIPTIDE
Mary Kate Stanfa and Angelie Humbert
accompanied by Alec Fenne

PUT YOUR RECORDS ON
Grace Dwyer

EMBRACE YOUR PASSION FOR PIZZA

BRINGING FAMILIES AND FRIENDS TOGETHER FOR GENERATIONS.



\$3 OFF YOUR \$25 PURCHASE WITH THIS AD.

VISIT US AT

Geneva Location:
330 W. State St.
Geneva, IL 60134
Phone: 630-262-8440

SIGNATURE SAUCE • HOMEMADE CRUST • FRESHEST INGREDIENTS



STRAWFLOWER
SHOP & RUG MERCHANT
Express Your Lifestyle

www.strawflowershop.com

Locally owned and experienced home decor retailers invite you to visit their store at 210 W. State Street in downtown Geneva. Come and see our wide selection of beautiful and unique items all under the historic clock tower.

Mon. - Fri.: 10 am - 5:30 pm, Thurs. until 8 pm, Sat.: 10 am - 5 pm, Sun.: Noon - 4 pm

630.232.7141 • 210 W. State Street • Geneva, IL 60134

FINALE

- | | |
|--------------------|------------------|
| Sophie Bertocchi | Austin Lewis |
| Annie Brown | Bethany Nelson |
| Emily Brown | Jediah Nims |
| Natalie Carberry | Erin Novotny |
| Emily Chang | Bryann Poskonka |
| Sammie Costabile | Caroline Rau |
| Maddy Donatelli | Nick Reszel |
| Isaac Drew | Chris Rich |
| TJ Farrell | Simran Sachdev |
| Alec Fenne | Ellie Spindle |
| Aly Fogel | Mitchell Spencer |
| Caleb Fringer | Lexie Spevak |
| Cameron Graber | Mary Kate Stanfa |
| Grace Higgins | Claire Strnad |
| Angelie Humbert | Henry Tawzer |
| Isabella Kane | Sara Temple |
| Jacob Kochniarczyk | Evan Wiseman |
| Cassie Kuyawa | Lizzy Zarley |
| Mark Lamb | |

137 First St., Batavia, Illinois
630.879.7774

403 S. Third St., St. Charles, Illinois
630.584.6050



JOHN WAZIO JR. DDS, MS

www.wazioorthodontics.com



GHS THEATRE BOOSTERS

Theatre Boosters promotes and supports theatrical events at GHS and helps to build a supportive culture behind our talented youth.

JOIN US!

Email darcycarberry@hotmail.com
for more information.

SPONSORSHIP OPPORTUNITIES

ADVERTISE: We love our local businesses for their support! Consider advertising in our playbill. Ads start at \$100 for 1/8 page. Contact darcycarberry@hotmail.com for more information.

DONATE: Membership dues start at \$25 for Theatre Boosters. Dues can be paid on revtrak on the geneva304.org site at any time. Your \$25 goes a long way to support the kids. Donation levels are:

- FRIEND \$25 – Your name is listed on our website
 - PATRON \$75 – Your name is listed on our website and in the playbill
 - BENEFACTOR \$150 – All of the above, plus 2 tickets to each theatrical performance.*
 - VIP \$250 – All of the above, plus 4 tickets to each theatrical performance.*
- *Complimentary admission to the Fall Play, Spring Musical, and Viking Revue.

VOLUNTEER: We are a small group of dedicated parents and whether your student is an actor, a musician, or a “techie”, we need your help. Join us in creating some theatre magic! Contact darcycarberry@hotmail.com or check out our website GenevaTheatreBoosters.org for more information. Our meetings are held on the second Thursday of each month at 7:30 at the high school.

See our website for more information on how your donation helps support the Music and Drama department productions as well as our talented youth at GHS.

ALL CONTRIBUTIONS ARE TAX DEDUCTIBLE

GenevaTheatreBoosters.org



Stockholm's

Restaurant • Brewery

306 W State Street
Downtown Geneva
630-208-7070

www.stockholmsbrewpub.com

We Brew Our Own Root Beer!

CHEF Roby
A.C.K.
All CHOCOLATE KITCHEN

VISIT US AND HAVE
AUTHENTIC GELATO AFTER THE PLAY!

33 S. THIRD ST., GENEVA, IL
630.232.2395
www.allchocolatekitchen.com

2014 - 2015 Productions

The Love of
Three Oranges

S.O.A.P.

 Peter Pan

Viking Revue

FUTURE PRODUCTIONS

See you next year! For more information, visit our Web site at www.genevatheatrebooters.org or join us on Facebook (Geneva High School Theatre Boosters).



McCormick & Friman, LLC

Estate Planning

Our Estate planning attorneys will work with you to review your entire financial picture to design an estate plan that will protect your family and your assets.

Business Law

Whether you are starting a new business, managing day-to-day operations, expanding the scope of your business or winding down and getting ready to pass your venture to the next generation, our attorneys can guide you through the process.

Tax Planning & Preparation

We take a global look at your tax and financial structure to recommend a coordinated plan that can save you thousands of dollars as well as ensure that your return is done correctly.

Our attorneys have extensive experience in representing clients in disputes with the IRS. The combination of experience, education and background, when applied to your individual tax situation, can mean thousands of dollars in savings for you at tax time.

Estate & Trust Administration and Litigation

Our attorneys represent individuals and families in every type of trust administration, probate and litigation issue. Dealing with the loss of a loved one is difficult. With our experience and knowledge, you will be comforted knowing that your affairs and responsibilities will be handled in a straightforward, concerned and efficient manner.

We look forward to helping you no matter what your legal needs.

McCormick & Friman, LLC
2 N. LaSalle Street, Suite 1250
Chicago, IL 60602
P: 312.466.0800
www.mflegalgroup.com



